

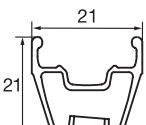



# CROSSMAX™ SLR DISC

**USE:** Use only on a Cross Country MTB fitted with disc brakes. Any other use (such as on a tandem, Cyclo-Cross bike, Cross Mountain, road bike, free-ride or downhill bike...) is strongly inadvisable, is the sole responsibility of the user and voids the Mavic warranty.

<b>WHEEL WEIGHTS WITHOUT QUICK RELEASE SKEWER:</b>	
<b>INT.</b>	<b>CL</b>
Front: 690 g	685 g
Rear: 840 g	835 g

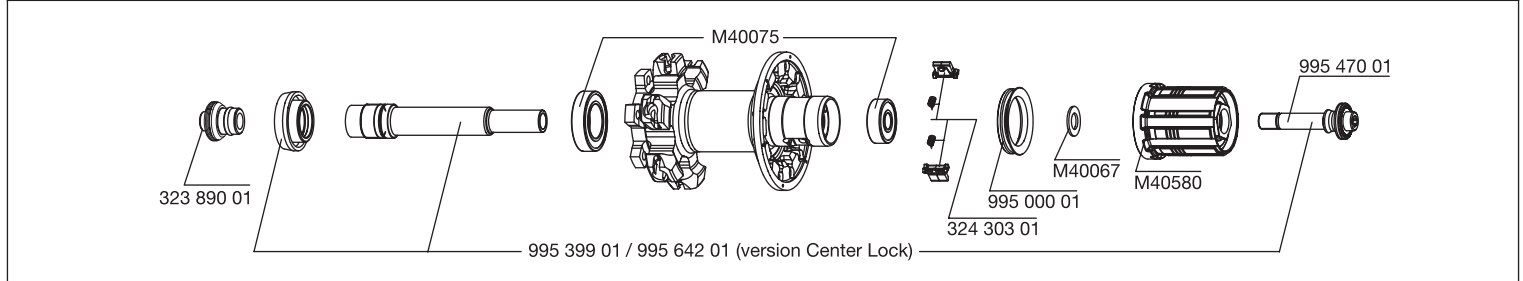
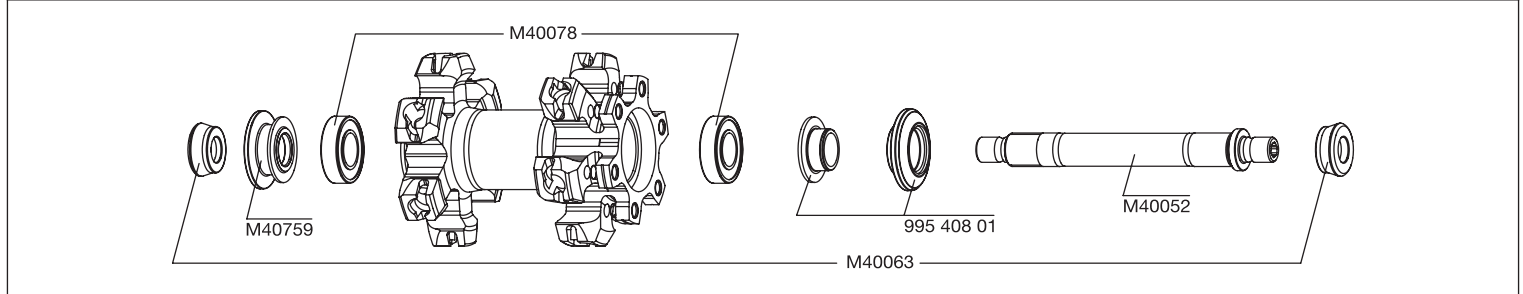
<b>WHEEL REFERENCES INT. STANDARD:</b>	
Front:	995 285 10
Rear:	995 286 13
Pair:	995 287 14

<b>WHEEL REFERENCES CENTER LOCK:</b>	
Front:	995 291 10
Rear:	995 292 13
Pair:	995 293 14


<p><b>RIMS</b></p> <p><b>WIDTH</b></p> 	<p><b>SALES REFERENCES:</b></p> <p>Front: 995 375 10 Rear: 995 375 13</p>	<p><b>RECOMMENDED TIRE WIDTH AND PRESSURE</b></p>  <p>Ø 26" only ETRTO 559 x 17 and UST Tubeless compatible Recommended tire width: 1.0 to 2.1</p>  <p>Recommended tire pressure: See page 17</p>
	<p><b>VALVE HOLE Ø</b></p>  <p>Ø: 6.5 mm Length: ≥ 32 mm</p>	<p>The instructions given in the UST user guide must be followed to the letter when fitting a UST Tubeless tire: wet the tire beads and rim tape using soapy water, check the 2 beads of the tire are correctly positioned at the bottom of the rim's central groove and across the base of the valve; then inflate the tire energetically until primary sealing is made.</p>

- When replacing the front rim:**
1. With the valve hole near you, the raised indicator bump must be to the left of the valve hole
  2. The spoke in the 1st hole to the right of the valve hole should be inserted on the disc side and should be a non-braking spoke.
- When replacing the rear rim:**
1. With the valve hole near you, the 2 raised indicator bumps must be to the right of the valve hole;
  2. The spoke in the 1st hole to the right of the valve hole should be inserted on the drive side into a marked hub hole.

<b>HUBS</b>	<p><b>MAINTENANCE:</b> Clean with a dry cloth or soap and water. Do not use pressurized water.</p>
-------------	--



<b>WHEEL BUILDING</b>	<p><b>REFERENCES AND LENGTHS</b></p> <p>Front: 995 376 01, length 261 mm (per 12 + 1 red, integrated nipples) Rear drive side: 995 377 01, length 248 mm (per 12 + 1 red, integrated nipples) Rear non-drive side: 995 378 01, length 263 mm (per 12, integrated nipples)</p>
-----------------------	---

<p><b>CHARACTERISTIQUES :</b> Black (1 red spoke per wheel), bladed, Zical, straight pull spokes, sunk on the front wheel, with integrated M7 aluminum nipples (self-locking).</p>	<p><b>LACING PATTERN:</b> Front: crossed 2 on both sides Rear: Isopulse</p> 	<p><b>TENSION:</b> Front: 110 to 145 kg Rear drive side: 115 to 150 kg</p>
--	---	--

<p><b>ACCESSORIES</b></p> <ul style="list-style-type: none"> <li>• BX 601 Titanium front quick release skewer 995 388 01</li> <li>• BX 601 Titanium rear quick release skewer 995 389 01</li> <li>• Wheel bags</li> <li>• Removable UST valve 995 282 01</li> <li>• Computer magnet M40540 (with front wheel)</li> <li>• M7 spoke wrench M40494 (with rear wheel)</li> <li>• Wrench for aerodynamic spokes M40567 (with rear wheel)</li> <li>• Free play adjustment wrench M40123 (with rear wheel)</li> <li>• User guide and warranty card</li> </ul>	<p><b>WHEELS SUPPLIED WITH:</b></p>	<p><b>MAINTENANCE</b></p> <table border="0"> <tr> <td>Replacing the front axle and bearings</td> <td>See page 19</td> </tr> <tr> <td>Replacing the rear axle</td> <td>See page 20</td> </tr> <tr> <td>Maintaining and replacing the free wheel mechanism</td> <td>See page 21</td> </tr> <tr> <td>Replacing the rear bearings</td> <td>See 2003 TM page 22</td> </tr> <tr> <td>Replacing a spoke</td> <td>See 2003 TM page 24</td> </tr> <tr> <td>Replacing the front rim</td> <td>See page 22</td> </tr> <tr> <td>Replacing the rear rim</td> <td>See 2006 TM page 17</td> </tr> </table> <p>To quickly consult this information in a practical manner, refer to <a href="http://www.tech-mavic.com">www.tech-mavic.com</a></p>	Replacing the front axle and bearings	See page 19	Replacing the rear axle	See page 20	Maintaining and replacing the free wheel mechanism	See page 21	Replacing the rear bearings	See 2003 TM page 22	Replacing a spoke	See 2003 TM page 24	Replacing the front rim	See page 22	Replacing the rear rim	See 2006 TM page 17
Replacing the front axle and bearings	See page 19															
Replacing the rear axle	See page 20															
Maintaining and replacing the free wheel mechanism	See page 21															
Replacing the rear bearings	See 2003 TM page 22															
Replacing a spoke	See 2003 TM page 24															
Replacing the front rim	See page 22															
Replacing the rear rim	See 2006 TM page 17															