

# Spare parts list for after market.

**SHIMANO®**

SHIMANO XTR Rear Disc Brake

**BR-M965** Brake Caliper

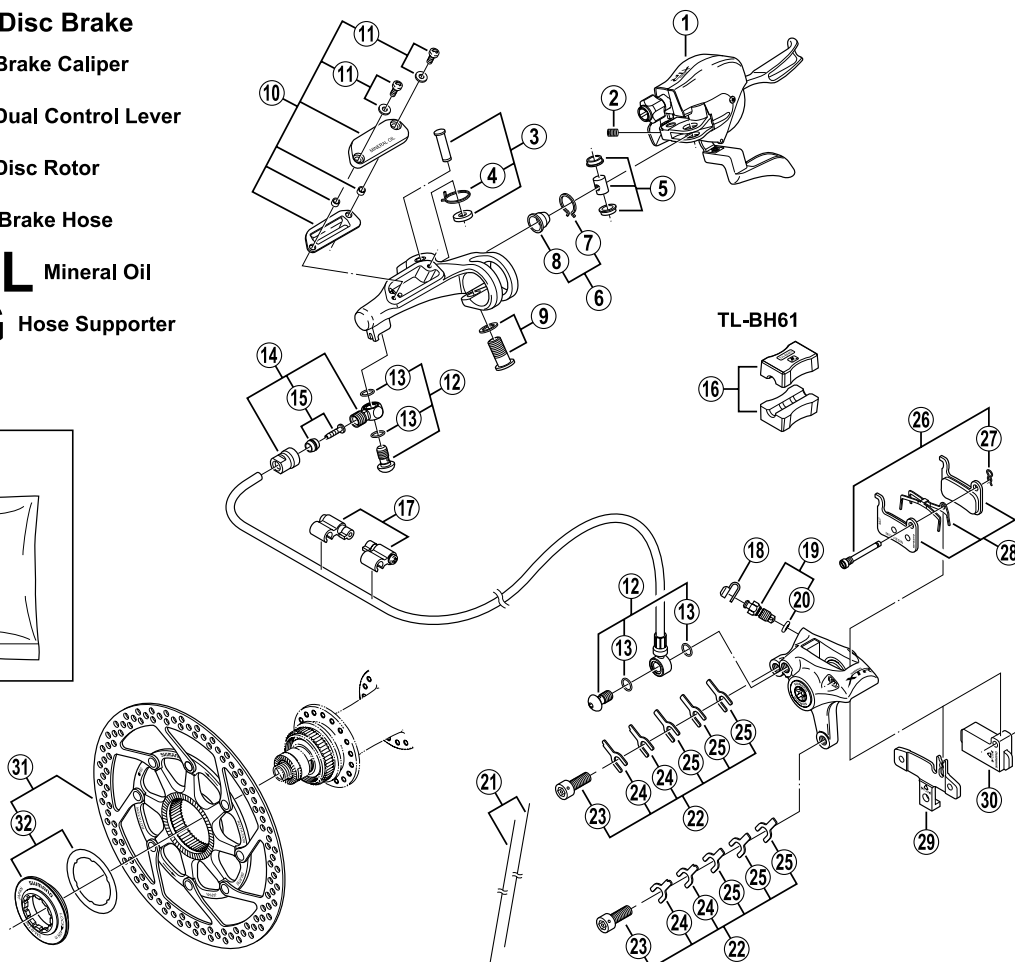
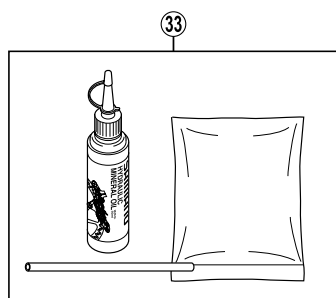
**ST-M965** Dual Control Lever

**SM-RT96** Disc Rotor

**SM-BH96** Brake Hose

**SM-DB-OIL** Mineral Oil

**SM-HANG** Hose Supporter



Q'TY	ITEM NO.	SHIMANO CODE NO.	DESCRIPTION
	1	Y-6GS98010	R.H. Main Lever Assembly
	2	Y-6AU84000	Lever Axle Fixing Bolt (6 mm)
	3	Y-6GS98090	R.H. Lever Axle Unit
	4	Y-6GS84000	R.H. Fixing Spring
	5	Y-6GS98120	Reach Adjusting Boss & Bush
	6	Y-8SY 98070	Boot & Stopper
	7	Y-8SY 30000	Boot Stopper
	8	Y-8SY 17000	Boot
	9	Y-6AU98090	Clamp Bolt (M8 x 16) & Washer
	10	Y-6GS98130	R.H. Lid Unit
	11	Y-8SZ 98020	Lid Fixing Screw (M3 x 8) & Washer
	12	Y-8H0 98010	Banjo Bolt & O-Ring
	13	Y-8SY 28000	O-Ring
	14	Y-8CL 98110	Banjo Unit
	15	Y-8H2 98020	Olive & Connecting Insert
	16	Y-8H1 98030	TL-BH61 Special Tool (2 pcs.)
	17	Y-830 98040	Hose Supporter A & B
	18	Y-8B2 14000	Bleed Nipple Cap
	19	Y-8CL 98050	Bleed Nipple & Seal Ring
	20	Y-8B5 11001	O-Ring for Bleed Nipple
	21	Y-8B2 98010	Wire (2 pcs.)
	22	Y-8CL 98060	Caliper Fixing Bolt Unit
	23	Y-8B2 17000	Caliper Fixing Bolt A (M6 x 16.5)
	24	Y-8CL 13000	Spacer (0.5 mm)
	25	Y-8CL 14000	Adjusting Washer (0.2 mm)
	26	Y-8CL 98070	Pad Axle & Snap Ring
	27	Y-8B2 12000	Snap Ring
	28	Y-8CL 98010	Metal Pad (M06) & Spring
		Y-8CL 98020	Resin Pad (M07) & Spring
	29	Y-8CL 12000	Pad Spacer
	30	Y-8CL 18000	Spacer for Bleeding
	31	Y-8CL 98080	Disc Rotor Unit (φ 160 mm)
	32	Y-8CL 98090	Lock Ring & Washer
	33	Y-839 98010	Mineral Oil Bleed Kit (50 ml)